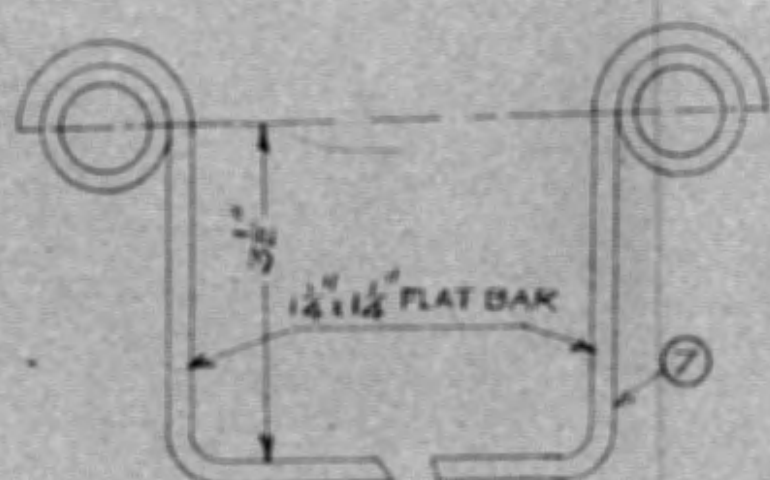
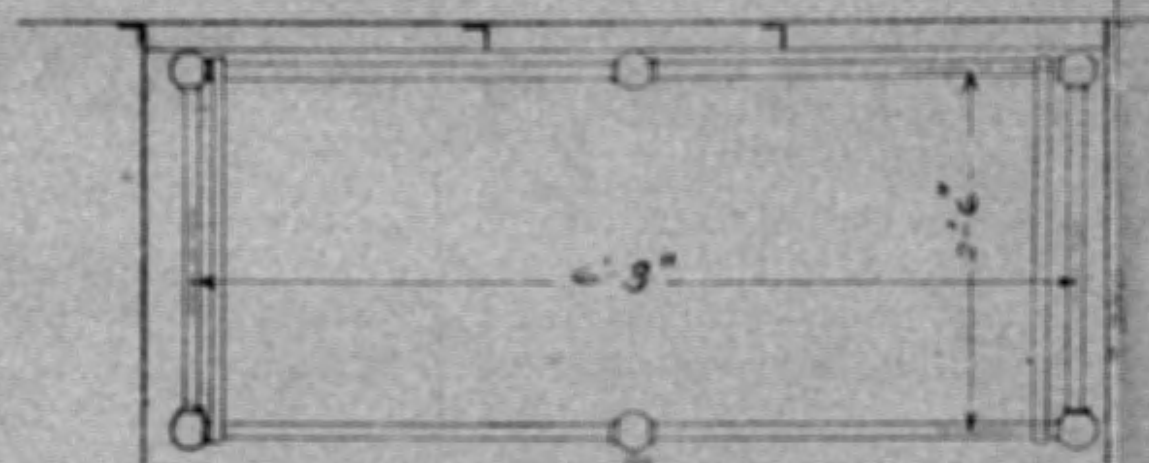


ELEVATION
TYPE OF BERTH FOR MASTERS AND OFFICERS
STATEROOMS

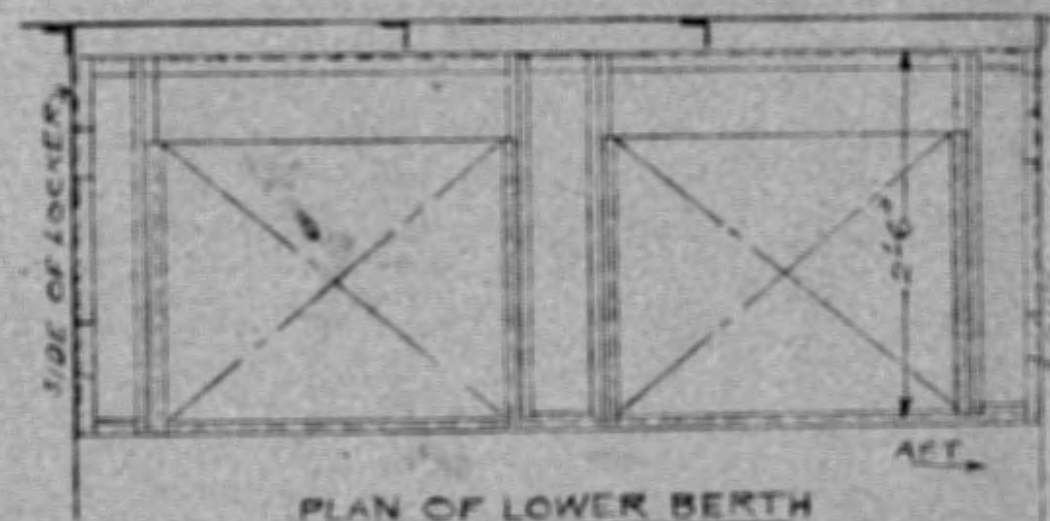


DETAIL OF SPRING HANGER

- 9 AS DRAWN - 3'-6" WIDE
- 10 TO OTHER HAND 3'-6" WIDE
- 11 AS DRAWN 2'-6" WIDE
- 12 TO OTHER HAND 2'-6" WIDE
- 13 TO OTHER HAND 3'-6" WIDE



PLAN OF UPPER BERTH

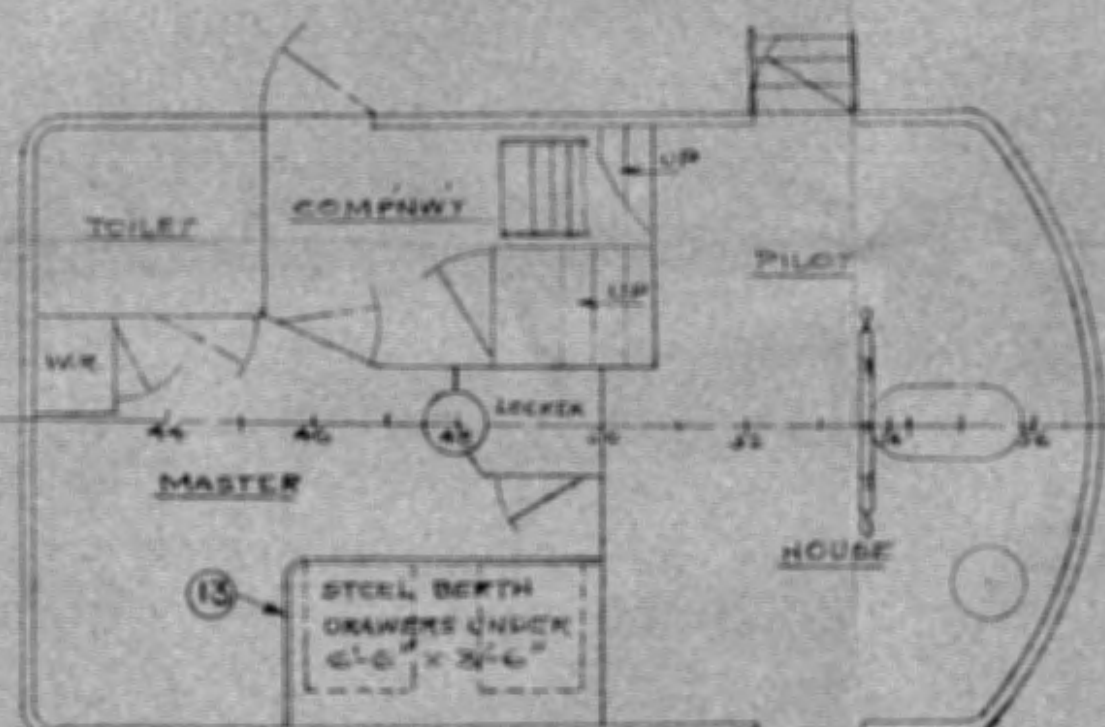


PLAN OF LOWER BERTH

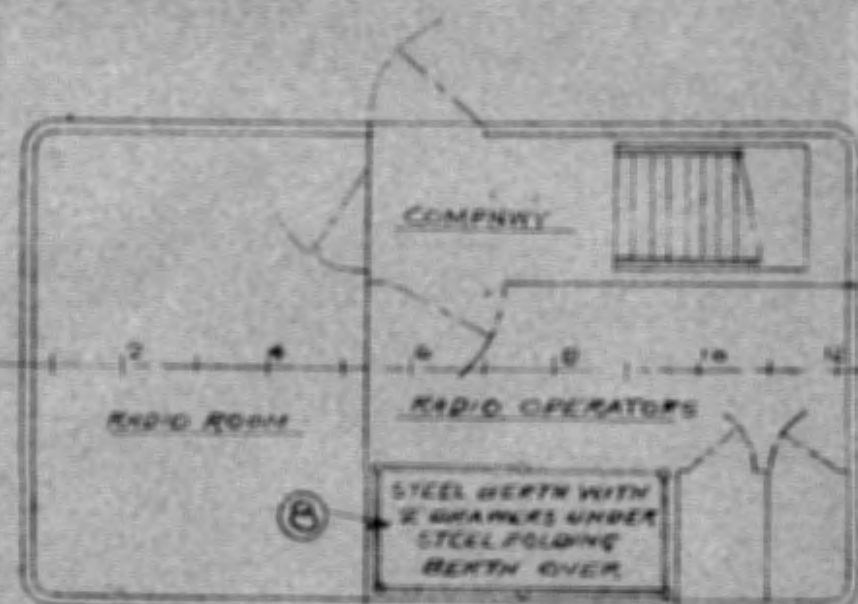
BILL OF MATERIAL				
AMT	NAME OF ITEM	NO	MATERIAL	REMARKS
4	BALL PAT. RAIL TEE SIDE	2	MALL. IRON	RUN REAMED
2	BALL PAT. RAIL TEE R.H.	3	"	"
2	BALL PAT. RAIL TEE L.H.	4	"	"
1	BALL PAT. RAIL TEE ELL	5	"	1 OUTLET L.H. THRO
3	BALL PAT. RAIL TEE ELL	6	"	"
2	SPRING HANGER	7	STEEL	"
1	BERTH (COMPLETE)	8	"	RADIO OPR
1	3'-6" BERTH	9	"	1ST OFFR
1	3'-6" BERTH	10	"	CHIEF ENGR
1	2'-6" BERTH	11	"	ASST ENGR
1	2'-6" BERTH	12	"	1 DRAWER
1	3'-6" BERTH	13	"	2ND OFFR
				1 DRAWER
				MASTER

NOTE 1-

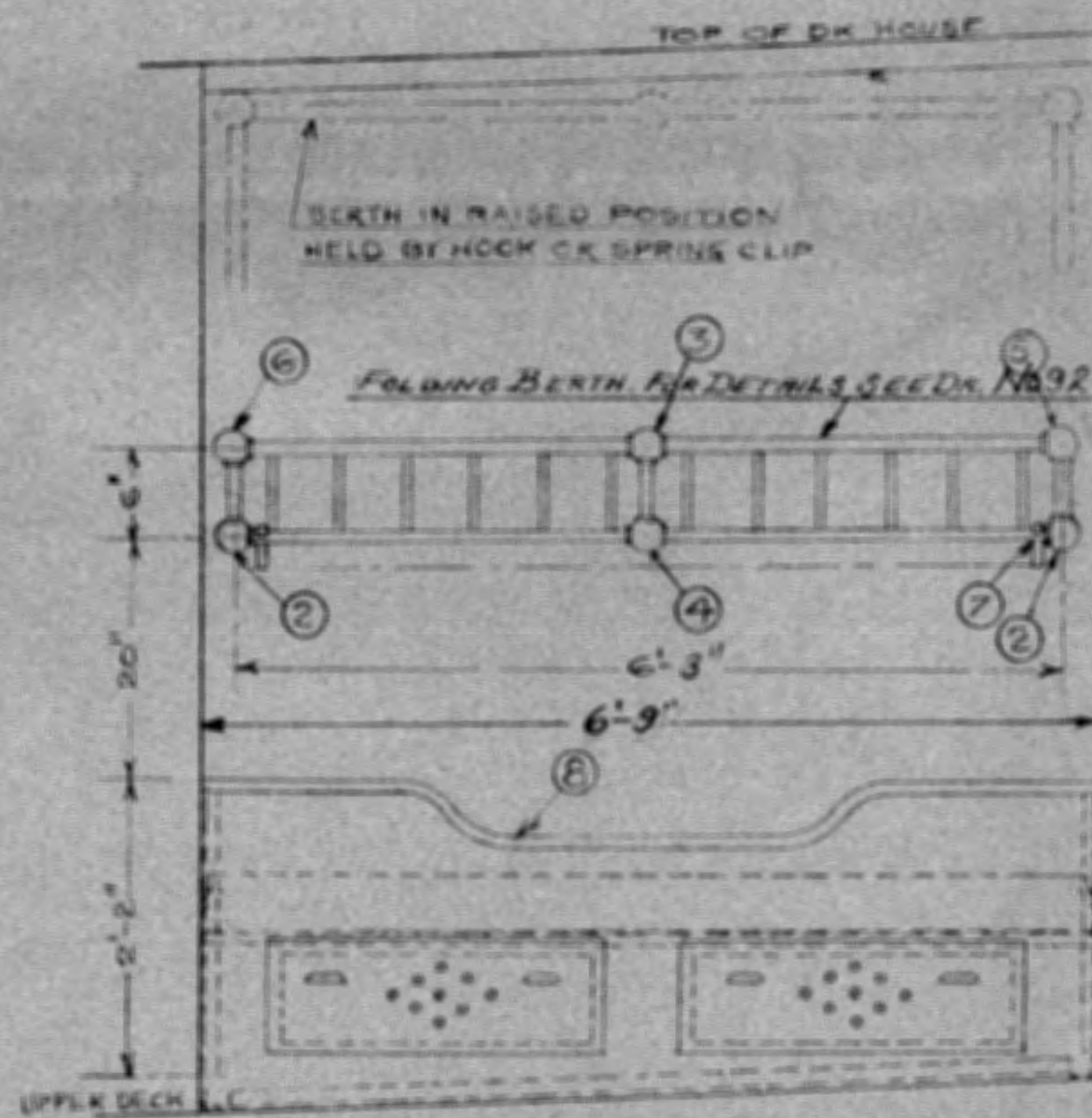
ALL MATERIALS USED IN BERTHS TO BE GALVANIZED
ALL BERTHS TO BE HORIZONTAL
ALL LOCKS, CATCHES, DRAW PULLS ETC TO BE BRONZE
AND AS APPROVED BY SUPT OF CONSTRUCTION



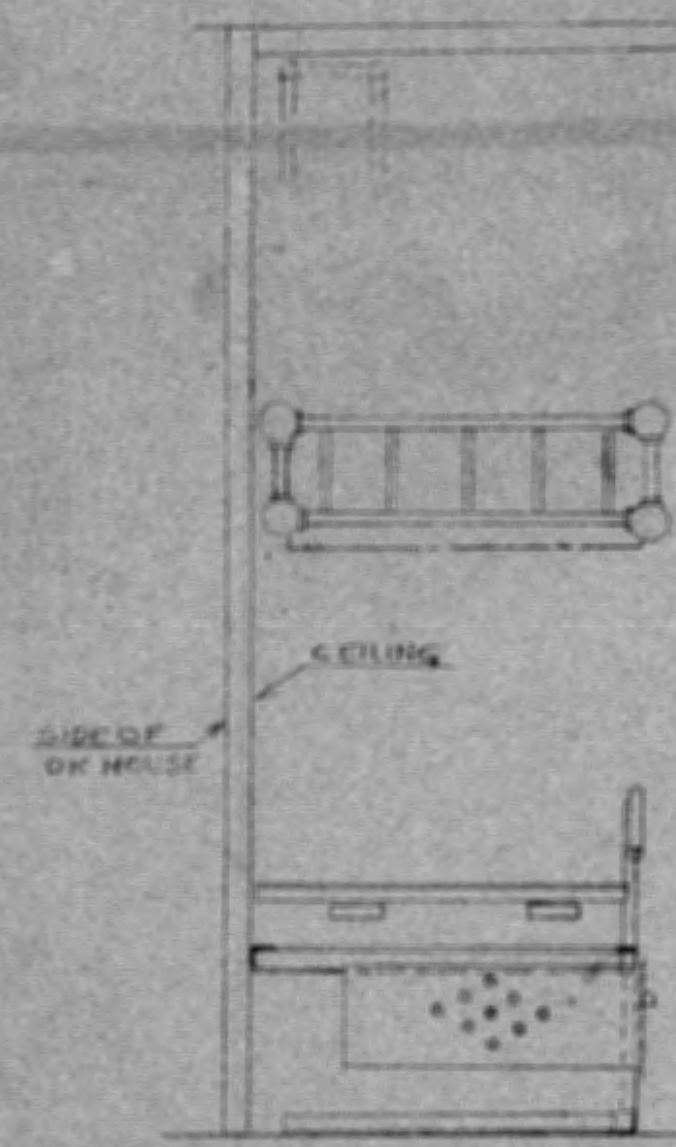
ARRANGEMENT SHOWING
BERTH IN MASTERS QUARTERS



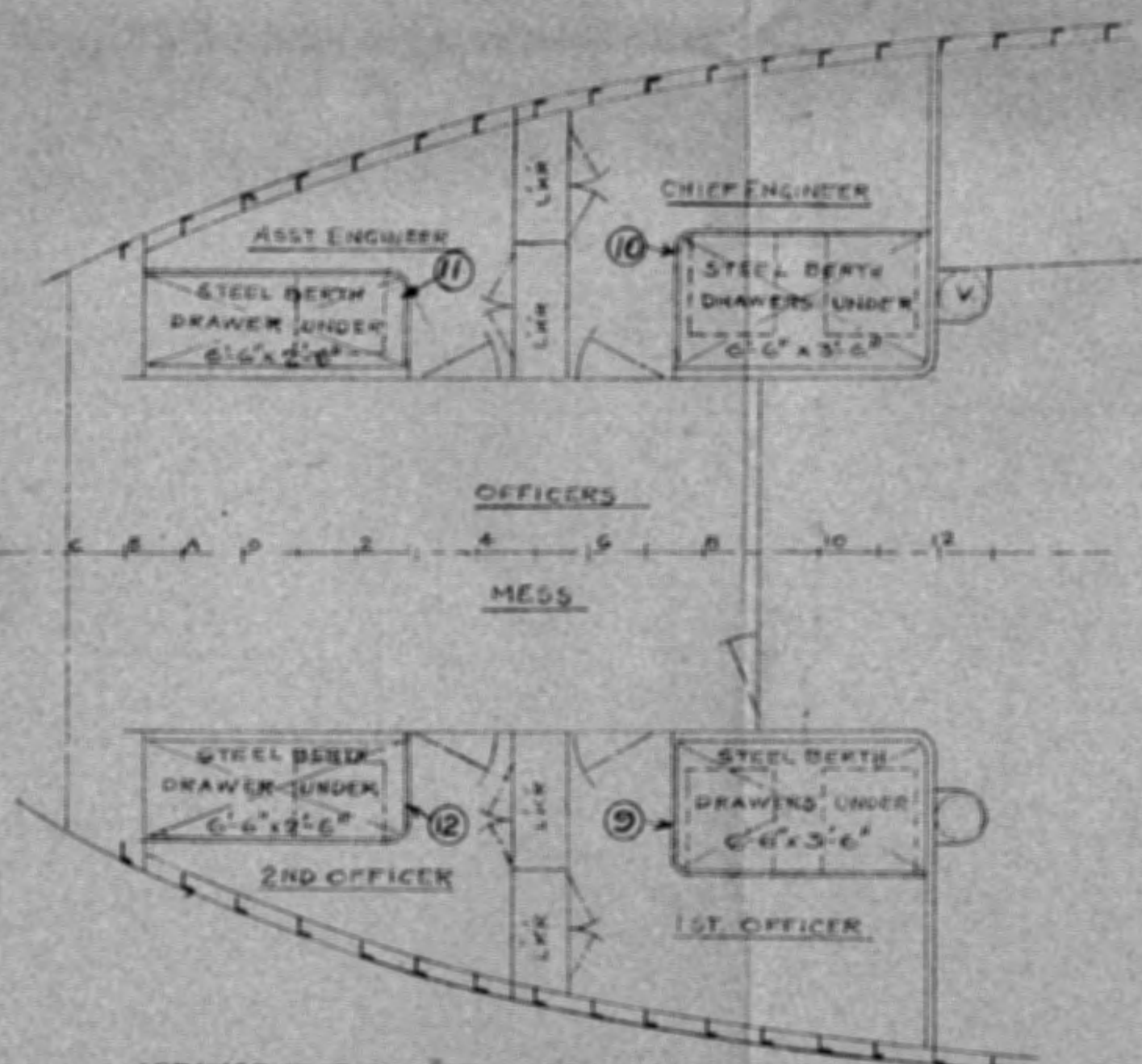
ARRGT OF BERTHS IN RADIO
OPERATORS STATEROOM



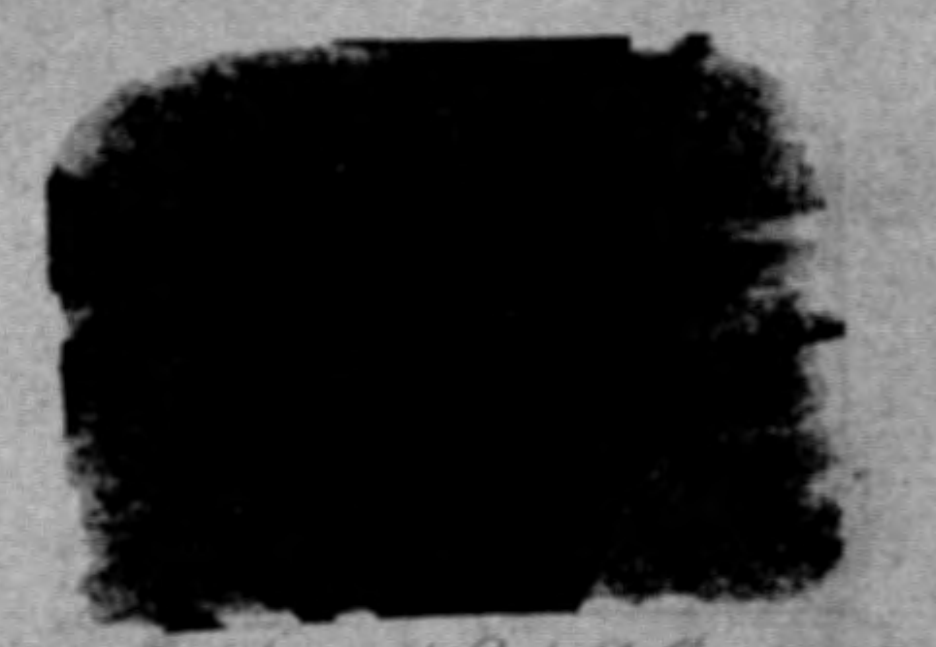
ELEVATION - BERTHS IN RADIO
OPERATORS STATEROOM



ELEVATION OF BERTHS
LOCKING ACT



ARRANGEMENT OF BERTHS IN
OFFICERS QUARTERS



19198
U.S. LIGHT SHIPS-115-116-117
CLASS OF NO 100
STEEL BERTHS IN OFFICERS QTRS
BUREAU OF LIGHTHOUSES
WASHINGTON D.C.
CHARLESTON DRY DOCK & MACH CO.
CHARLESTON, S.C. SEPT 10, 1926
SCALE 1/4" = 1'-0"
DRAWN BY E.F.R.H.
TRACED BY H.
CHECKED BY J.W.

DR. NO 102

523 VAS 3306-2