

REAR VIEW

part no.	part name	material	pcs	note	ident cod
1	stabilizer	WP 3mm	2	-	HT01
1a	stabilizer	HB 3mm	2	-	HT01a
2	stabilizer	WP 3mm	2	-	HT02
3	stabilizer	HB 3mm	2	-	HT03
4	stabilizer	HB 3mm	2	-	HT04
7	elevator rib	WP 3mm	2	-	HT07
8	elevator rib	HB 3mm	2	-	HT08
9	elevator rib	HB 3mm	2	-	HT09
9a	elevator rib	HB 3mm	2	-	HT09a
10	elevator rib	HB 3mm	2	-	HT10
11	elevator rib	HB 3mm	2	-	HT11
12	elevator rib	HB 3mm	2	-	HT12
12a	elevator rib	HB 3mm	2	-	HT12a
13	elevator rib	WP 3mm	2	-	HT13
14	elevator rib	WP 3mm	2	-	HT14
14a	elevator rib	WP 3mm	2	-	HT14a
14b	elevator rib	WP 3mm	2	-	HT14b
15	leading edge vertical	B 6mm	2	sand to shape	HT15
16	leading edge horizontal	HB 3mm	2	-	HT16
17	stabilizer spar	WP 3mm	2	-	HT17
18	stabilizer tip bow	WP 3mm	2	-	HT18
19	elevator LE	SP 3x3mm	2	-	HT19
20	elevator spar half	WP 3mm	4	-	HT20
21L	trailing edge left	HB 3mm	2	sand to shape	HT21L
21R	trailing edge right	HB 3mm	2	sand to shape	HT21R
23	balsa block 15x10mm	HB 6mm	12	trim to fit	HT23
24	nut plate	WP 3mm	2	-	HT24
25	press nut M3	metal	2	file one edge	HT25
26	joiner tube 5/4mm	Al	4	-	HT26
27	elevator sheeting	B 1.5mm	4	-	HT27
28	elevator sheeting	B 1.5mm	4	-	HT28
29	stabilizer sheeting	B 1.5mm	4	-	HT29
30	pin hinge 43x2,5mm	plastic	6	-	HT30
31	trailing edge strip	Ply 1mm	2	-	HT31
32	eyebolt M3	metal	2	strut attachment	HT32

NOTE: specification made for left&right tail!

MATERIAL LEGEND:

- WP White Poplar Plywood
- Ply Plywood
- B Balsa wood
- SB Soft balsa wood
- HB Hard balsa wood
- SP Spruce wood
- PCB PCB composite material
- Al aluminum
- Al balsa grain orientation

MS-UL-Design

Model: **SZD-10 Czapla, 1:5 scale model**

Drawing: **HORIZONTAL TAIL**

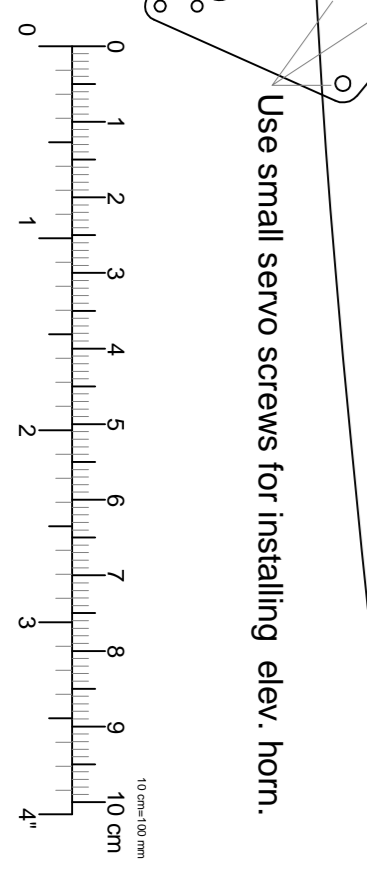
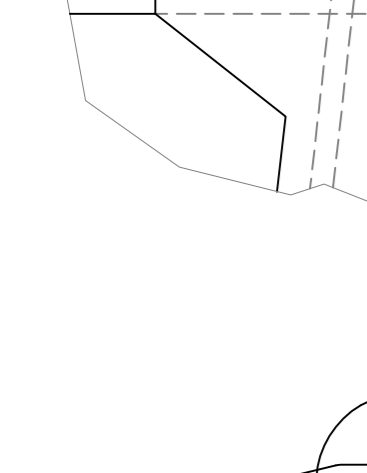
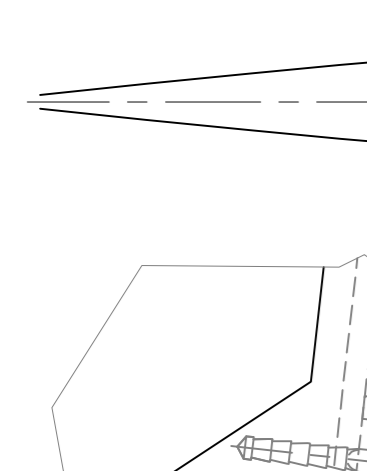
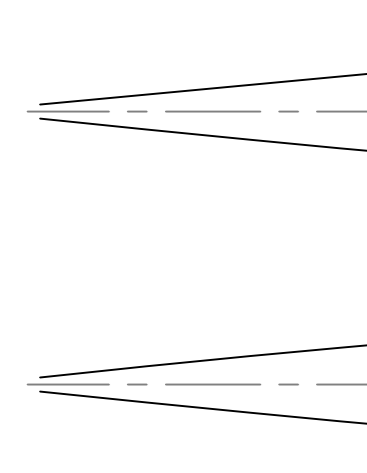
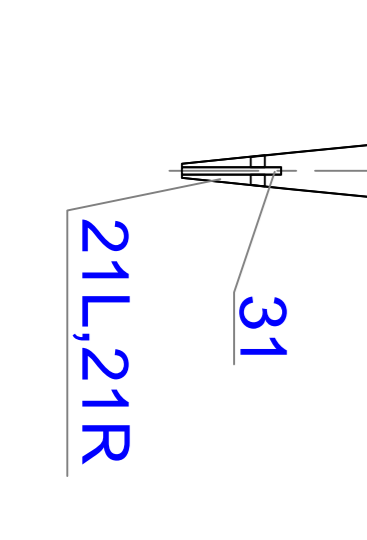
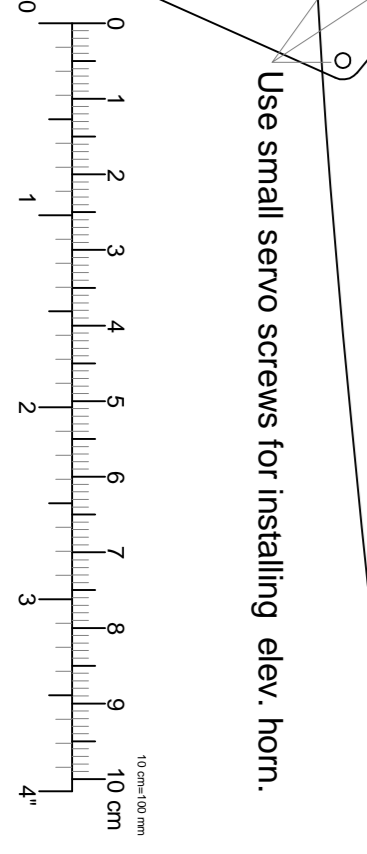
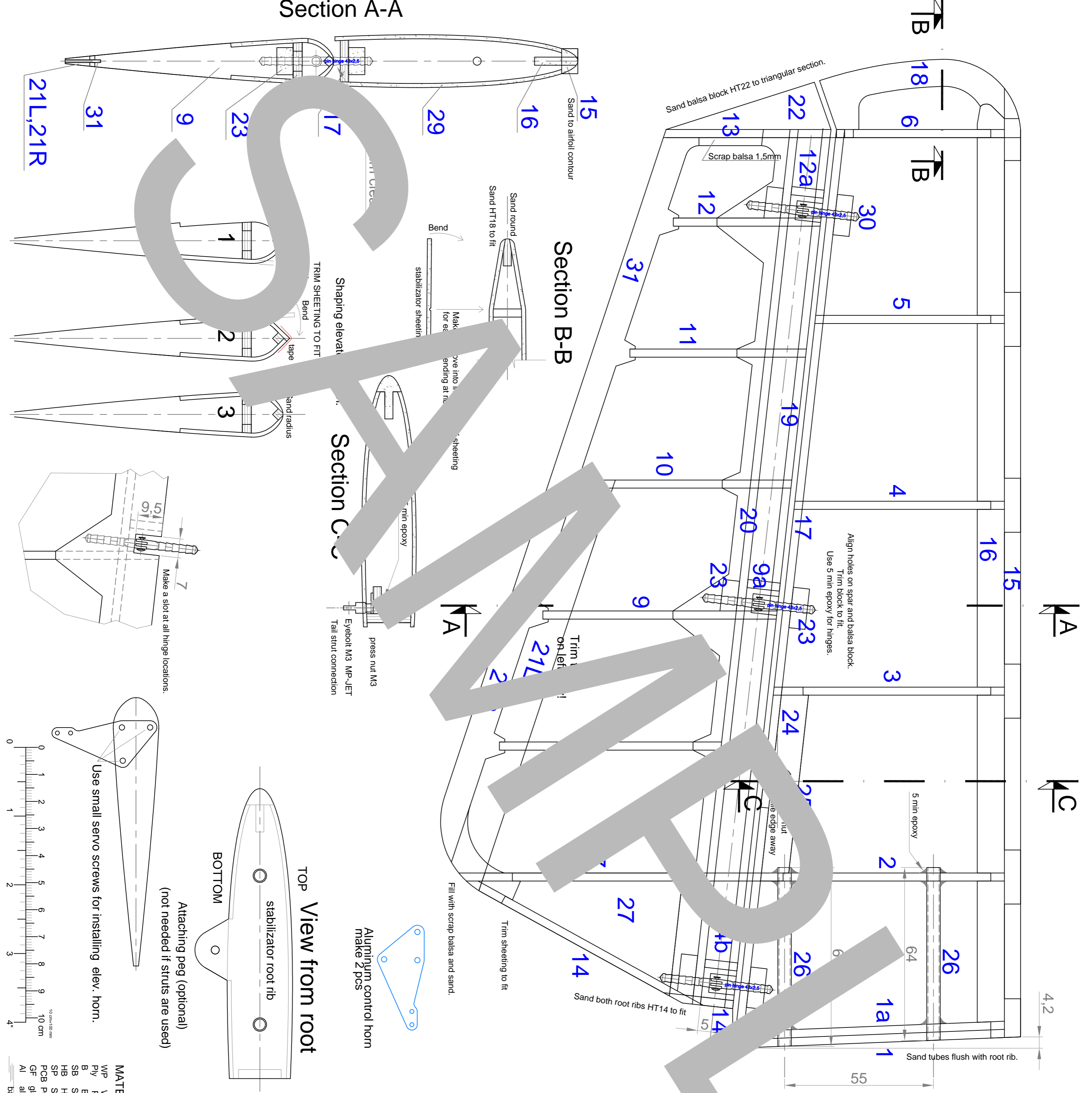
assembly drawing

scale: 1:5

paper size: A4

Designed by Ultralajt, Jul.2009

Note: Plans for personal use only. No commercial use allowed unless written permission from the author.



MS-UL-Design

Model: **SZD-10 Czapla, 1:5 scale model**

Drawing: **HORIZONTAL TAIL**

assembly drawing

scale: 1:5

paper size: A4

Designed by Ultralajt, Jul.2009

Note: Plans for personal use only. No commercial use allowed unless written permission from the author.