

April 2017

Community orchard consultation

The draft plans for the new community orchard can be seen over page. Please email your feedback to oepea@hotmail.com.au and alternative ideas are welcome. Let us know what you like or dislike about the plans. Do you have any other ideas?

If you would like to contribute skills, resources or a pair of hands to help with the construction and planting, please voice your interest.

Currently, the various orchard elements are being planned for a staged installation:

Stage 1: plant trees in mulched garden beds, path from park-toilet, Wide path as bocce court. U-shaped paths to initially be grass.

Stage 2: extra garden seats, hand ball court

Stage 3: U-shaped paths converted from grass to gravel - same as gravel paths in park

Trees list:

Asn	Acca sellowiana 'Nazematze' Feijoa	Mgn	Mespilus germanica 'Nottingham' Medlar
CIm	Citrus limon x sinensis 'Meyer' Lemon	Mni	Morus nigra Black Mulberry
Coc	Cydonia oblonga 'Champion' Quince	Pam	Prunus armeniaca 'Moorpark' Apricot
Cos	Cydonia oblonga 'Smyrna' Quince	Pdg	Prunus domestica 'Greengage' European Plum
Dki	Diospyros kaki 'Ichikikeijiro' Persimmon	Pdp	Prunus domestica 'President' European Plum
Ejn	Eriobotrya japonica 'Nagasakiwase' Loquat	Pin	Prunus institia Damson Plum
Fcb	Ficus carica 'Brown Turkey' Fig	Ppa	Prunus persica 'Anzac' Peach
Fcg	Ficus carica 'Black Genoa' Fig	Psm	Prunus salicina 'Mariposa' Blood Plum
Mdc	Malus domestica 'Coxs Orange Pippin' Apple	Pss	Prunus salicina 'Santa Rosa' Blood Plum
Mdr	Malus domestica 'Royal Gala' Apple	Qru	Quercus rubra Red Oak*
Mdv	Malus domestica 'Vista Bella' Apple		

Community Gardens

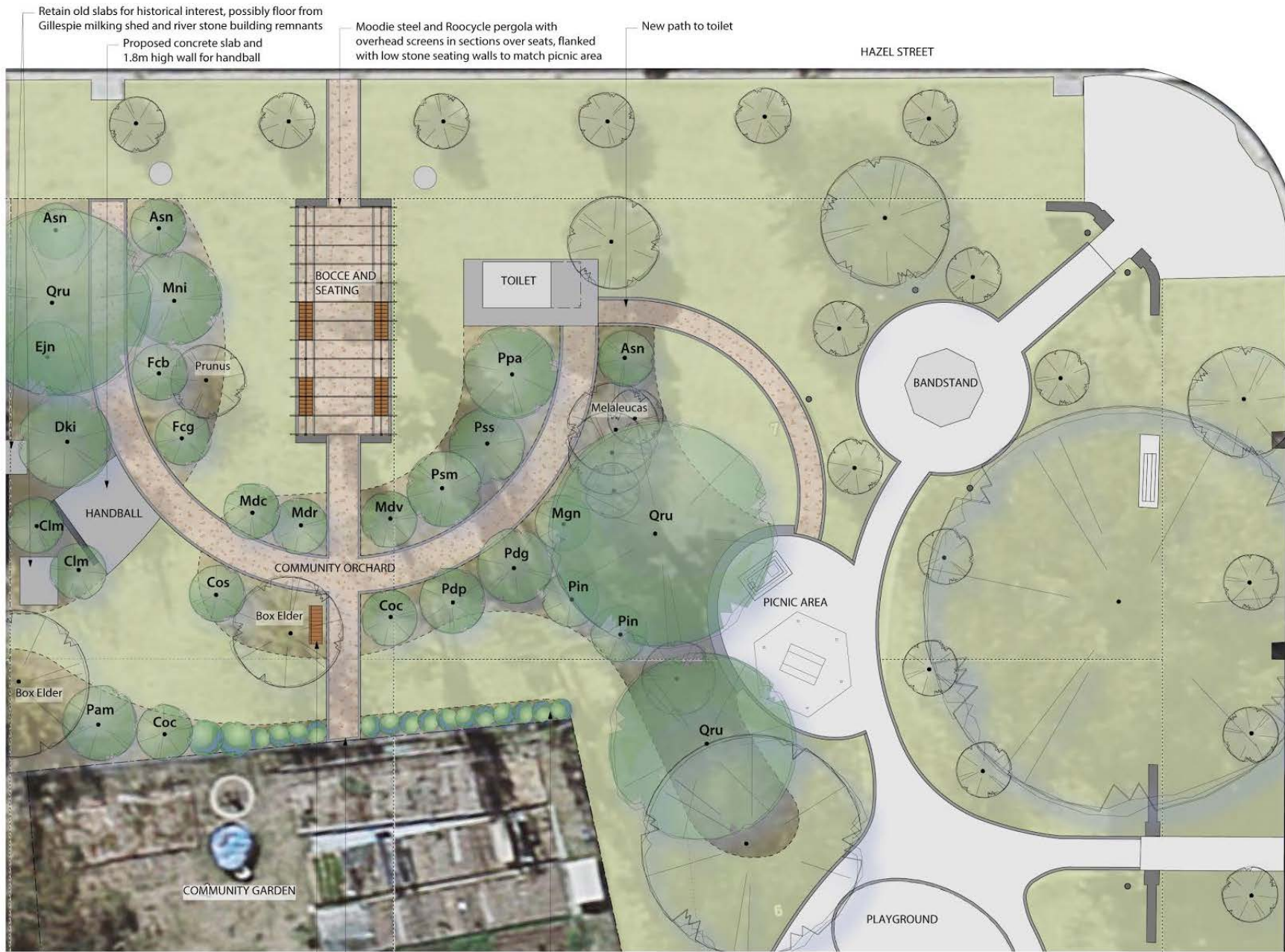
In response to some concerns raised, your feedback on the COGs community garden next to Gillespie Park along Railway St would be welcome. Please email your views on the appearance and management of the site, as well as any suggested improvements to oepea@hotmail.com.au

Platypus Count: Queanbeyan River

Regular monitoring of platypus in the area of Oaks Estate for the Conservancy has occurred since 2014. In February 2017, the Australian Platypus Conservancy officially confirmed the junction of the Molonglo and Queanbeyan Rivers at Oaks Estate is a place that platypus make use of, albeit, in low numbers. The main monitoring area is up-stream in Queanbeyan where the number of sightings is more likely and considerably higher. Platypus are most often seen in winter and spring when they are out for longer periods foraging for food.

Toilet

The toilet in the park is now open for business! Hours are 8.30am – 5pm 7 days. If you would like the toilet open later for an event, please contact oepea@hotmail.com.au



- LEGEND**
- Existing tree
 - Proposed tree
 - Fruiting shrub (blueberries, currants, rhubarb)
 - Block boundary
 - Fence
 - Wall
 - Concrete pavement
 - Crushed granite path with concrete edges
 - Lawn
 - Mulched planting bed (requires soil improvement, no formal edges)
 - Seat - Draffin Steel Slatted Bench to match picnic setting near barbecue

Refer to drawing 389-S2 for plant schedule and design details.

Retain old slabs for historical interest, possibly floor from Gillespie milking shed and river stone building remnants
 Proposed concrete slab and 1.8m high wall for handball
 Moodie steel and Roocycle pergola with overhead screens in sections over seats, flanked with low stone seating walls to match picnic area
 New path to toilet
 Edible shrub planting along refurbished community garden fence in conjunction with COGS

Seat with back and armrests under tree

New gate provides access from community garden to toilet

PRELIMINARY